



Echos  
COLOR

Echosline  
the *Vegan* way

## PURE NATURALS

1.0



3.0



4.0



5.0



6.0



7.0



8.0



9.0



10.0



## EXTRA INTENSE NATURALS

44.0



55.0



66.0



77.0



88.0



99.0



## ICE NATURALS

5.0 Ice



6.0 Ice



7.0 Ice



8.0 Ice



9.0 Ice



10.0 Ice



EXTRA COLD

1.11



5.11



6.11



7.11



8.11



9.11



10.11



COLD BROWN

4.7 Cold



5.7 Cold



6.7 Cold



7.7 Cold



WARM BROWN

4.72



5.72



6.72



7.72



PURE BROWN

5.7



6.7



7.7



8.7



9.7



10.7



8.32 Nude



9.32 Nude



10.32 Nude



PURE GOLD



COPPER WOOD

COPPER GOLD

PURE COPPER



EXTRA COPPER

COLD COPPER

PURE RED



## PURE MAHOGANY

4.55



5.55



## PURE VIOLET

4.22



5.22



6.26



5.27



## BLOND EXTRA LIFT

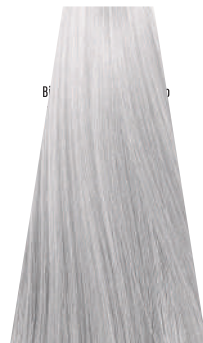
12/0



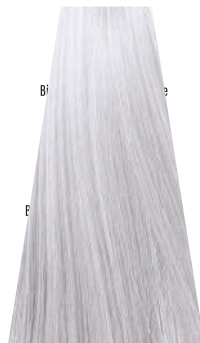
12/22



12/11



12/88



## PURE BLOND

11.12



11.72



## PURE COLORS

Red



Orange



Gold



Turquoise



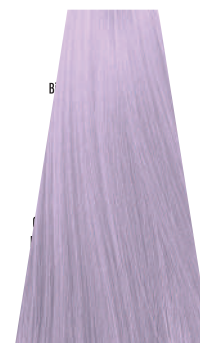
Indigo



Violet



Wisteria

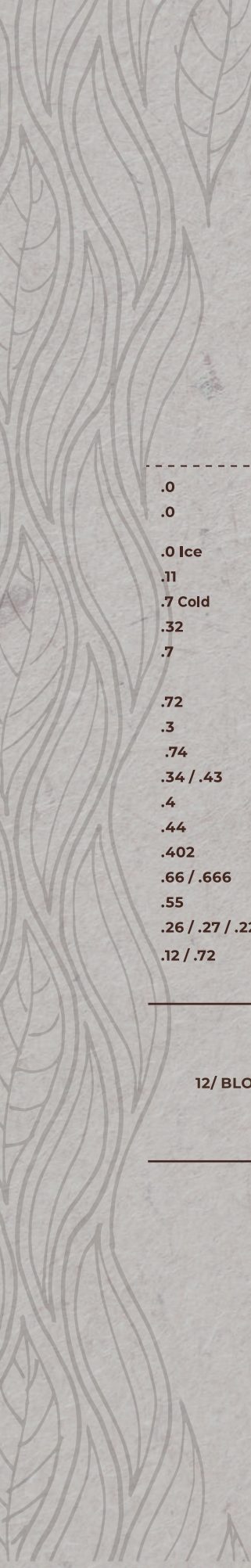











Ash



Clear

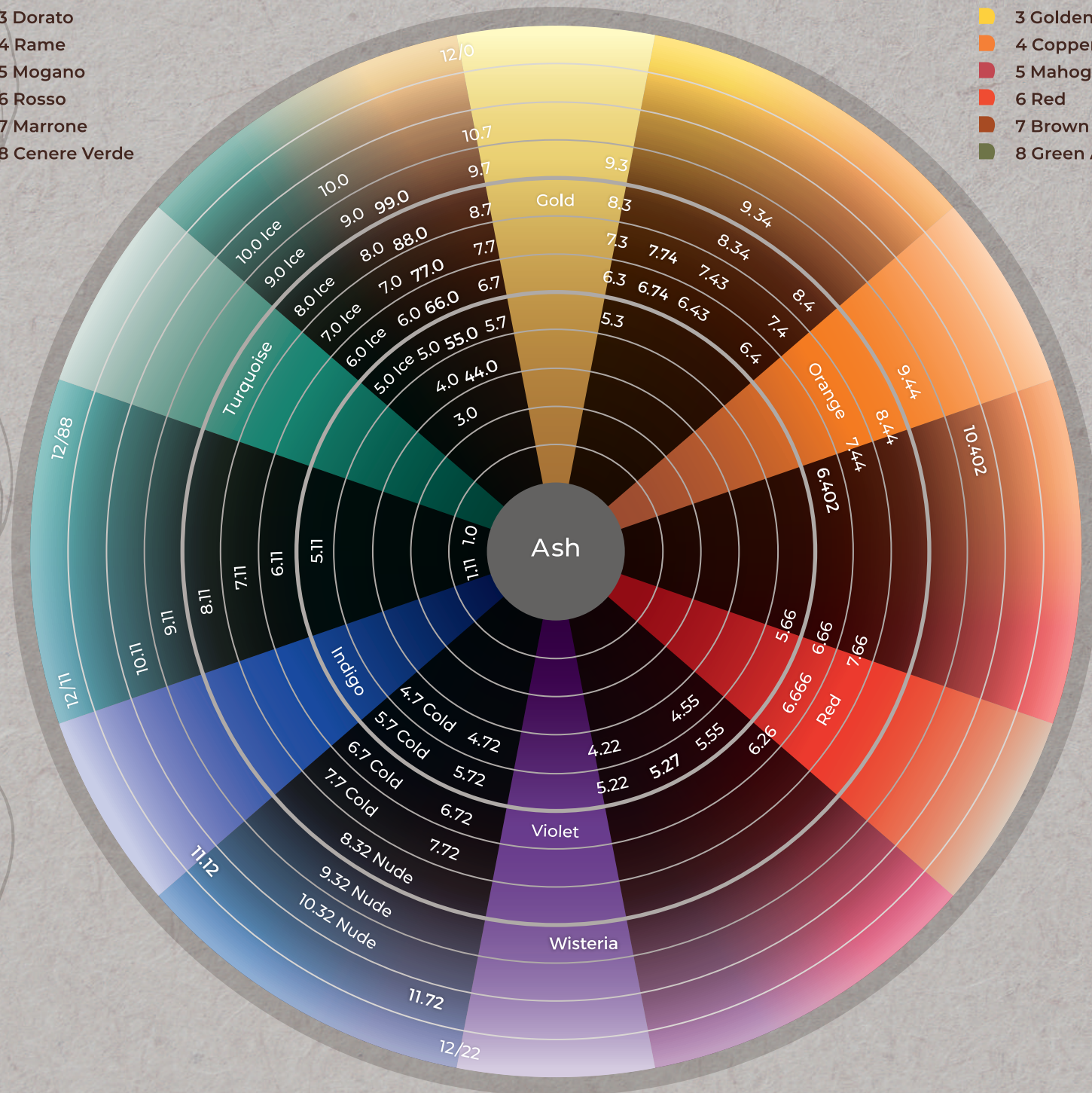




			 Echos Oxy	 Level Lift	 Coverage	 Time
.0	PURE NATURALS					
.0	EXTRA INTENSE NATURALS	1:2/1:3				
.0 Ice	ICE NATURALS	50g Echos Color	7 Vol. (2,1%)	Balancing / Toning	30% 	5 - 25'
.11	EXTRA COLD	+				
.7 Cold	COLD BROWN	100g / 150g Echos Oxy				
.32	NUDE BEIGE					
.7	PURE BROWN					
	/ PURE SAND					
.72	WARM BROWN					
.3	PURE GOLD		10 Vol. (3%)	Tone on tone	60% 	25 - 30'
.74	COPPER WOOD	1:1,5				
.34 / .43	COPPER GOLD	50g Echos Color				
.4	PURE COPPER	+				
.44	EXTRA COPPER	75g Echos Oxy	20 Vol. (6%)	1 - 2 level		30 - 35'
.402	COLD COPPER					
.66 / .666	PURE RED					
.55	PURE MAHOGANY		30 Vol. (9%)	2 - 3 level	100% 	35 - 40'
.26 / .27 / .22	PURE VIOLET					
.12 / .72	PURE BLOND		40 Vol. (12%)	3 - 4 level		40 - 45'
	PURE COLORS					
		1:2				
12/ BLOND EXTRA LIFT		50g Echos Color	40 Vol. (12%)	4 - 5 level		45 - 50'
		+				
		100g Echos Oxy				

- 0 Naturale
- 1 Cenere Blu
- 2 Viola
- 3 Dorato
- 4 Rame
- 5 Mogano
- 6 Rosso
- 7 Marrone
- 8 Cenere Verde

- 0 Natural
- 1 Blue Ash
- 2 Violet
- 3 Golden
- 4 Copper
- 5 Mahogany
- 6 Red
- 7 Brown
- 8 Green Ash



CREDITS  
Hair: Echoline Stylistic Team  
Photo: Marco Di Filippo

www.echoline.it



echoline.official

©2022 Pettenon S.p.A. S.B.  
All Rights Reserved

**Echoline**  
the *vegan* way

PETTENON COSMETICS S.p.A. S.B. - Via del Palù, 7/D | 35018 San Martino di Lupari (PD) ITALIA

Cod. Fisc., P.Iva e Registro delle Imprese di Padova n. 04937500280, R.E.A. PD 430007

Cap. Soc. € 5.000.000,00 i.v., società soggetta a direzione e coordinamento di AGF88 Holding S.r.l.